



[www.qualityrentsequipment.com](http://www.qualityrentsequipment.com)



### CUSTOMER DEMOS AND IN-HOUSE TRAINING WITH ENVIROSIGHT

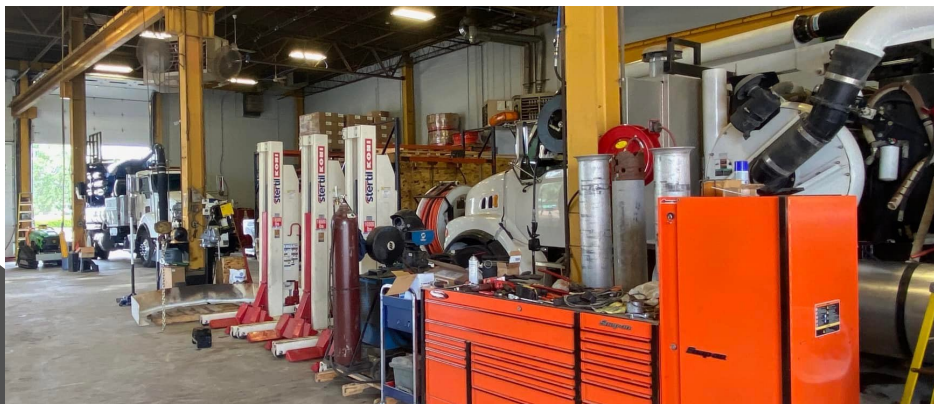
Report by Terri Rodina

Recently Jim Adams and Steve Sebastian from Envirosight visited our St. Louis (Bridgeton), Missouri location. They offered in-house training and demonstrations on the ROVER X SAT II Lateral Launch System. This system features multiple onboard cameras and sensors which makes locating construction defects, gas line cross bores and illicit flows uncomplicated. Contact your Territory Manager to schedule a demo and find out more about this state-of-the-art system and its industry-leading launching capabilities.

### OTHER STORIES INSIDE THIS ISSUE:

- SPRINGFIELD FACILITY
- EMPLOYEE SPOTLIGHT
- ENVIROSIGHT VSP+





### KEY EQUIPMENT & QUALITY RENTS SPRINGFIELD

Our newest location in Springfield, Illinois has been busy servicing customer units, rebuilding our used core brand products for resale, shipping parts, and providing rental units to our customers. Please stop by our facility or give us a call. We are available to provide you with all your parts, sales, service and rental needs. For service, call Justin Henton at (217)313-7408, for parts, call Sam Wolf at (217)622-2834 and for rentals, call Nicole Vislay at (724)584-0370. You can also contact your Illinois Territory Manager for equipment sales or rentals. Brad Franklin, Central Illinois Territory Manager, is available at (217)816-7055 and you can reach Kevin Foppe, Southern Illinois & St. Louis County Territory Manager, at (314)616-9617.



### EMPLOYEE SPOTLIGHT

Kelly Lane has worked at Key Equipment & Supply Company for over 30 years. In 1990, she joined Key Equipment as the Office Manager of the Kansas City branch. Promoted to Branch Manager in 2019, she now manages our offices at three facilities in Kansas City, Kansas, St. Louis (Bridgeton), Missouri, and Springfield, Illinois. Kelly collaborates daily with the parts and service team at all our locations and works towards implementing policies and procedures to streamline workflow and provide uniformity of operations between branches.

Kelly is married to our Lead CCTV Technician, Mike Lane. Between them, they have two daughters, a son, and four grandchildren. In her spare time, she enjoys going on cruises and fishing with her husband as well as traveling the country with her daughter, Amy, visiting amusement parks and museums. Kelly enjoys football and, of course, her favorite team is the Kansas City Chiefs!



**RENT TODAY**

## VERISIGHT PRO+

### FEATURES

- Available in 330', 200' and 130' models
- Interchangeable self-leveling or pan/tilt cameras
- Welded steel construction with protective powder coat
- IP64-rated control housing
- Sealed slip ring

