

# QR | Quality RENTS®

[www.qualityrentsequipment.com](http://www.qualityrentsequipment.com)



## SPARTAN LEAF PRO+ IS AVAILABLE FOR RENTAL

Report by Terri Rodina

One of our rental items that Quality Rents has available is the Spartan Leaf Pro+. Designed to be pulled behind a towing vehicle, this Spartan is a perfect way to pick up leaves. Leaf removal can be back-breaking work. The Spartan Leaf Pro+ is designed to reduce fatigue and increase efficiency to keep your team injury-free.



**Titan** LEAF™ SOLUTIONS

## OTHER STORIES INSIDE THIS ISSUE:

- 2022 MRWA ANNUAL CONFERENCE
- Employee Spotlight
- Spartan Leaf Pro Plus



*“With leaf season generally being a shorter season, rental from QR makes perfect sense. If an entity is short on capital money, but they want to continue the service of leaf cleanup for their residents, a short-term rental of a leaf vacuum could assist,” Mike Vislay, Vice President of Quality Rents.*





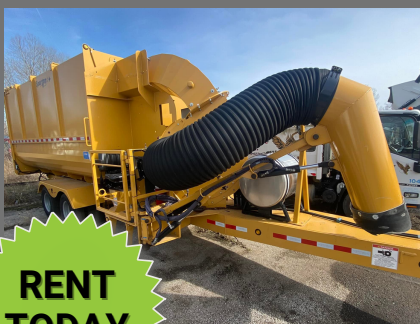
### 2022 MRWA ANNUAL CONFERENCE

Quality Rents and Key Equipment exhibited at the 2022 Missouri Rural Water Association's Annual Conference at the St. Charles Convention Center in St. Charles, MO. Just minutes away from Quality Rents Bridgeton, MO location, it was the ideal place to showcase some of our rental units and visit with a lot of our customers in attendance. Many of our Key Equipment parts, sales, and service team members were able to go to the show this year.



### EMPLOYEE SPOTLIGHT

Tim Brand has been with Key Equipment & Supply Co. since 2003. As Field Service Specialist, Tim does demonstrations on large equipment, maintenance, and repairs, with his specialty being Elgin sweepers. He travels to visit customers in Missouri, the City of St. Louis, and most of Illinois offering his assistance in other territories if needed. Known as an "all-around guy", Tim likes to call his close contacts friends rather than customers.



RENT TODAY

## SPARTAN LEAF PRO PLUS SPECS

- Safety interlock system on intake nozzle
- 50 gallon fuel tank
- 14,000 lb 3" adjustable pintle eye with safety chain
- 74hp, tier 4, liquid-cooled diesel-powered engine
- Manual jack, fire extinguisher, wheel chocks, and emergency stop switch
- 15-30 yd collection body with full tailgate
- DOT compliant lighting, markings, yellow flashers
- 12 volt electrical system
- 12,000 lb axles with electric trailer brakes
- Heavy duty direct drive fan